

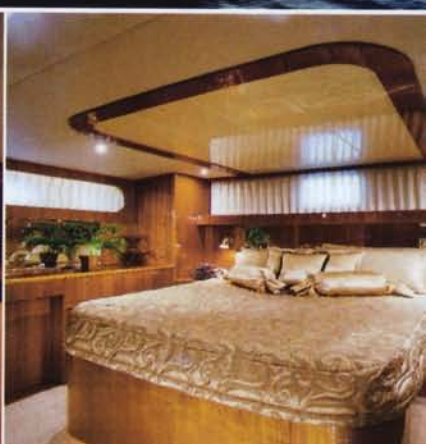


2007

MOTORYACHT Guide

MOTORYACHTS ARE SOME OF THE MOST VERSATILE AND POPULAR BOATS CRUISING OUR WATERS. THEIR HIGH SPEEDS, COMFORTABLE INTERIORS, AND RELATIVELY SHALLOW DRAFTS MAKE THEM IDEAL CHOICES FOR EXTENDED CRUISING THROUGHOUT OUR WARM REGIONS. TO GIVE YOU AN IDEA OF JUST A FEW OF THE OPTIONS AVAILABLE IN THE MOTORYACHT MARKET, WE HAVE GATHERED A SAMPLING OF SOME OF THE MORE RECENT LAUNCHES FROM BOTH AMERICAN AND INTERNATIONAL BUILDERS IN THE 60' TO 80' RANGE. WE HAVE ARRANGED THEM IN SIZE ORDER FROM SMALLEST TO LARGEST SO YOUR DREAMS CAN GROW WITH EVERY TURN OF THE PAGE.

JEFFERSON 60 MARQUESA



Jefferson's 60' Marquesa is all about stylish simplicity, ensuring owners and their guests maximum enjoyment from their time on the water. The 60's flush deck arrangement places the galley, saloon, and aft deck areas on the same level for easy maneuvering throughout the boat. Teak accents the interior, which is highlighted by the beautifully-etched glass window that separates the saloon from the lower helm station. The gourmet galley features full-size appliances and plenty of storage.

SPECIFICATIONS

LOA	59' 8"
BEAM	16'
DRAFT	4'
WEIGHT APPRX	60,700 LBS.
FUEL	700 U.S. GALS.
WATER	60 U.S. GALS.
POWER	2 x MTU @ 825 HP
CRUISING SPEED	18 KNOTS
TOP SPEED	22 KNOTS
RANGE	200 NM @ 18 KNOTS
MSRP	\$1,377,800

Owners can opt for three staterooms aboard or can equip the third as a study with work area. The ensuite master stateroom boasts a king-size bed and is located aft, while the guest staterooms are forward. This separation provides both owners and their guests with maximum privacy while on board. The flybridge offers commanding 360° vistas and entertains in style with lounges, a bar, a sink, and room for an optional barbecue grill. *Jefferson Yachts; Jeffersonville, IN; (812) 282-8111; jeffersonyachts.com*